

MPS Catalog Number:
Date:

S1 40 90 042 MX AL 027
01/23/2014

END FITTINGS

Tower End Fitting: Y-Clevis (Forged Steel)
Line End Fitting: Eye (Forged Steel)

MATERIAL

Corona Ring (Tower): None
Corona Ring (Line): None
Corona Rings are recommended for applications of 230 kV and above
Number of Sheds: 13 large 14 standard
Rod Diameter: 16 mm
Weight Estimate: 10.2 lbs 4.6 kg

DIMENSIONAL VALUES

Section Length (L): 55.6 in 1,415 mm
Rubber Length (X): 42.4 in 1,077 mm
Standard Shed Height (P1): 1.5 in 38 mm
Large Shed Height (P2): 2 in 51 mm
Projection Ratio (S/P): - 1.5
Shed Spacing (S): 3 in 76 mm
Dry Arc Distance: 44.8 in 1,138 mm
Leakage Distance: 121.8 in 3,094 mm

ELECTRICAL VALUES

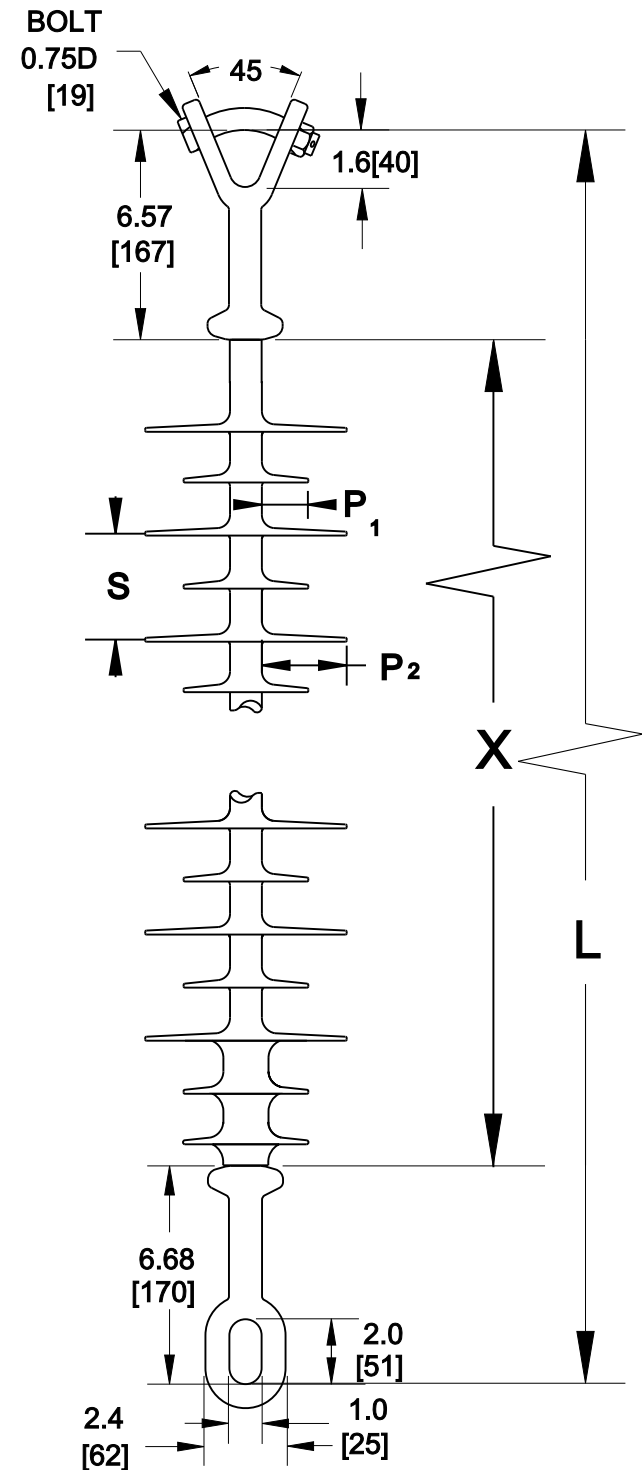
60 Hz Dry Flashover: 441 kV Min. Withstand: 408 kV
60 Hz Wet Flashover: 395 kV Min. Withstand: 344 kV
Pos. Critical Impulse Flashover: 757 kV Min. Withstand: 656 kV
Neg. Critical Impulse Flashover: 803 kV Min. Withstand: 704 kV

MECHANICAL VALUES

Specified Mech. Load (SML): 25,000 lbs 111.2 kN
Routine Test Load (RTL): 12,500 lbs 55.6 kN

This drawing contains confidential information that is property of MacLean Power L.L.C ('MacLean'). Use of MacLean's confidential information without MacLean's express written consent is strictly prohibited and may expose you to legal liability. If you believe that you received this material in error, please destroy it or return it to 'MacLean Power, L.L.C., 7801 Park Place Rd, York, SC, 29745, USA.'

Dimensions: inches [millimeters]
Note: Drawing not actual depiction of insulator appearance



Silicone Rubber Sheath & Sheds
Complies with applicable ANSI and IEC standards.